



CorePro LED PLL



CorePro LED PLL HF 12W 830 4P 2G11

Philips CorePro LED PLL is the ideal uplamping solution for downlights & luminaires in a wide range of general lighting applications. It integrates a LED light source into a traditional fluorescent form factor to offer superb energy savings over a lifetime that's twice as long as fluorescent alternatives.

Product data

General Information	
Cap-Base	2G11 [2G11]
Nominal lifetime	30,000 hour(s)
Switching Cycle	50,000
Lighting Technology	LED
Flux measurement reference	Sphere
EU RoHS compliant	Yes

Light Technical	
Color Code	830 [CCT of 3000K]
Beam Angle (Nom)	160 degree(s)
Luminous Flux	1,440 lm
Color Designation	White (WH)
Correlated Color Temperature (Nom)	3000 K
Luminous Efficacy (rated) (Nom)	120 lm/W
Color Consistency	<6
Color rendering index (CRI)	80
LLMF At End Of Nominal Lifetime (Nom)	70 %
Photobiological safety according to EN 62471	RG0

Operating and Electrical	
Line Frequency	20K-80K Hz
Input Frequency	20K-80K Hz

Power Consumption	12 W
Lamp Current (Max)	500 mA
Lamp Current (Min)	150 mA
Starting Time (Nom)	0.5 s
Warm-up time to 60% light	0.5 s
Power Factor (Fraction)	0.9
Voltage (Nom)	20-60 V
LED alternative to fluorescent lamp power	24 W
Max. lamp no. on MCB B type 10A - Mains	-
Max. lamp no. on MCB B type 10A – EM ballast without Comp. Cap.	-
Max. lamp no. on MCB B type 10A – EM ballast with Comp. Cap.	-
Max. lamp no. on MCB B type 16A - Mains	-
Max. lamp no. on MCB B type 16A – EM ballast without Comp. Cap.	-
Max. lamp no. on MCB B type 16A – EM ballast with Comp. Cap.	-

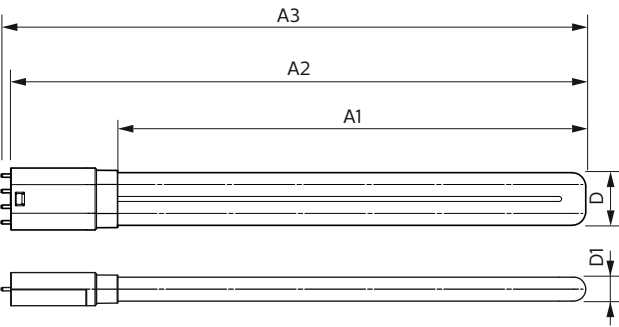
Temperature	
Ambient temperature range	-20 °C to 45 °C
T-Case Maximum (Nom)	70 °C

CorePro LED PLL

Controls and Dimming	
Dimmable	No
Mechanical and Housing	
Bulb Finish	Frosted
Bulb Material	Glass
Product Length	300 mm
Bulb Shape	PL-L
Approval and Application	
Energy Efficiency Class	E
Energy Saving Product	Yes
Approval Marks	RoHS compliance TUV CE marking KEMA Keur certificate
Energy Consumption kWh/1000 h	12 kWh
EPREL Registration Number	1370821

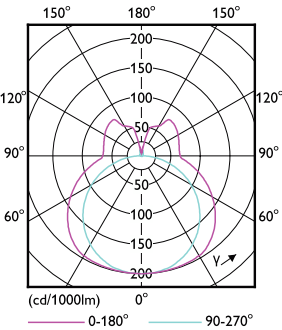
Product Data	
Order product name	CorePro LED PLL HF 12W 830 4P 2G11
Full product name	CorePro LED PLL HF 12W 830 4P 2G11
Full product code	871951448680500
Order code	929003579002
Material Nr. (12NC)	929003579002
Numerator - Quantity Per Pack	1
EAN/UPC - Product/Case	8719514486805
Numerator - Packs per outer box	10
EAN/UPC - Case	8719514486812

Dimensional drawing

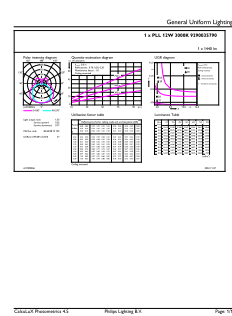


Product	D1	D2	A1	A2	A3
CorePro LED PLL HF 12W 830 4P 2G11	17 mm		250 mm	312 mm	319 mm

Photometric data



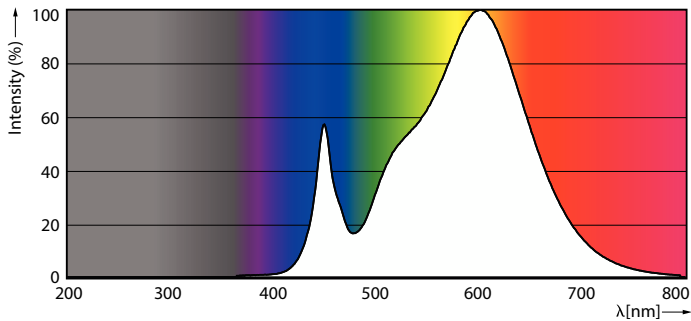
Light Distribution Diagram



General uniform lighting - CorePro LED PLL HF 12W 830 4P 2G11

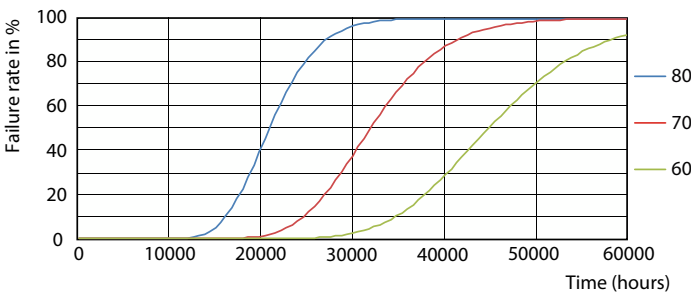
CorePro LED PLL

Photometric data

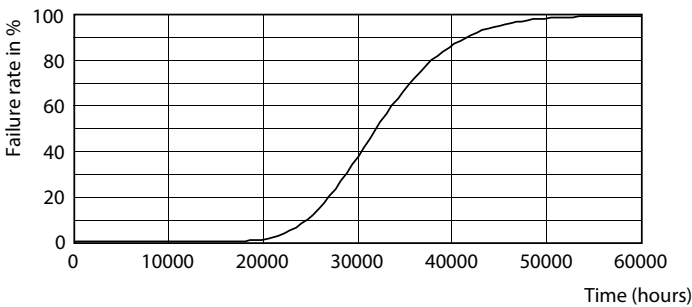


Spectral Power Distribution Colour

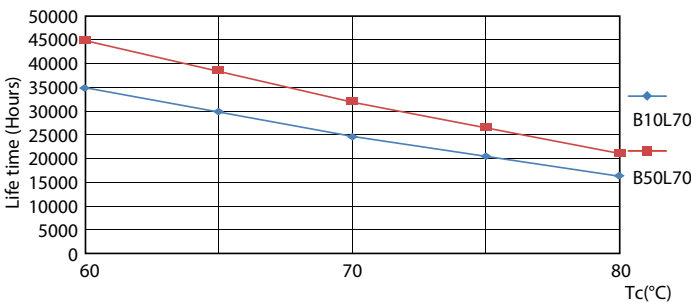
Lifetime



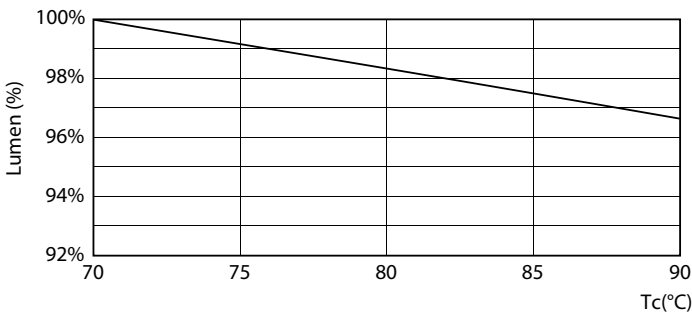
Life Expectancy Diagram - CorePro LED PLL HF 12W 830 4P 2G11



Life Expectancy Diagram - CorePro LED PLL HF 12W 830 4P 2G11



Life Expectancy Diagram - CorePro LED PLL HF 12W 830 4P 2G11



Lumen Maintenance Diagram

CorePro LED PLL

Lifetime



Lumen Maintenance Diagram - CorePro LED PLL HF 12W 830 4P 2G11

