



CorePro LED PLL



CorePro LED PLL HF 8W 830 4P 2G11

Philips CorePro LED PLL is the ideal uplampping solution for downlights & luminaires in a wide range of general lighting applications. It integrates a LED light source into a traditional fluorescent form factor to offer superb energy savings over a lifetime that's twice as long as fluorescent alternatives.

Product data

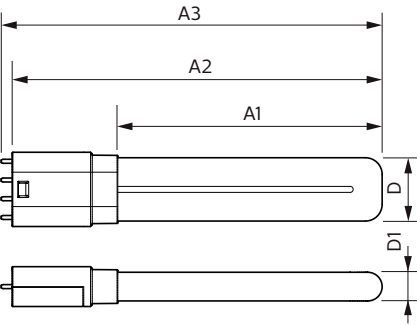
General Information		Power Consumption	
Cap-Base	2G11		8 W
Nominal lifetime	30,000 hour(s)	Lamp Current (Max)	500 mA
Switching Cycle	50,000	Lamp Current (Min)	150 mA
Lighting Technology	LED	Starting Time (Nom)	0.5 s
Flux measurement reference	Sphere	Warm-up time to 60% light	0.5 s
EU RoHS compliant	Yes	Power Factor (Fraction)	0.9
Light Technical		Voltage (Nom)	20-60 V
Color Code	830 [CCT of 3000K]	LED alternative to fluorescent lamp power	18 W
Beam Angle (Nom)	160 degree(s)	Inrush current at mains	-
Luminous Flux	960 lm	Max. lamp no. on MCB B type 10A - Mains	-
Color Designation	White (WH)	Max. lamp no. on MCB B type 10A – EM ballast without Comp. Cap.	-
Correlated Color Temperature (Nom)	3000 K	Max. lamp no. on MCB B type 10A – EM ballast with Comp. Cap.	-
Luminous Efficacy (rated) (Nom)	120 lm/W	Max. lamp no. on MCB B type 16A - Mains	-
Color Consistency	<6	Max. lamp no. on MCB B type 16A – EM ballast without Comp. Cap.	-
Color rendering index (CRI)	80	Max. lamp no. on MCB B type 16A – EM ballast with Comp. Cap.	-
LLMF At End Of Nominal Lifetime (Nom)	70 %	Ballast Compatibility	HF
Photobiological safety according to EN 62471	RG0	Temperature	
Operating and Electrical		Ambient temperature range	-20 °C to 45 °C
Line Frequency	20K-80K Hz		
Input Frequency	20K-80K Hz		

CorePro LED PLL

T-Case Maximum (Nom)	70 °C
Controls and Dimming	
Dimmable	No
Mechanical and Housing	
Bulb Finish	Frosted
Bulb Material	Glass
Product Length	200 mm
Bulb Shape	PL-L
Approval and Application	
Energy Efficiency Class	E
Energy Saving Product	Yes
Approval Marks	RoHS compliance TUV CE marking KEMA Keur certificate
Energy Consumption kWh/1000 h	8 kWh

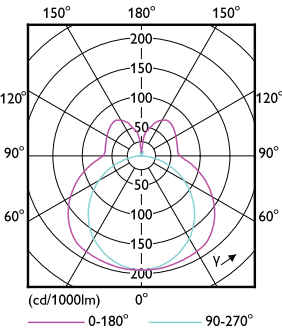
EPREL Registration Number	1370819
Product Data	
Order product name	CorePro LED PLL HF 8W 830 4P 2G11
Full product name	CorePro LED PLL HF 8W 830 4P 2G11
Full product code	871951448676800
Order code	929003578802
Material Nr. (12NC)	929003578802
Numerator - Quantity Per Pack	1
EAN/UPC - Product/Case	8719514486768
Numerator - Packs per outer box	10
EAN/UPC - Case	8719514486775

Dimensional drawing

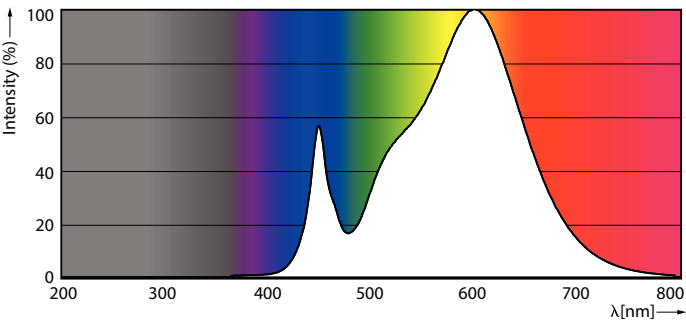


Product	D1	D2	A1	A2	A3
CorePro LED PLL HF 8W 830 4P 2G11	17 mm		155 mm	217 mm	224 mm

Photometric data

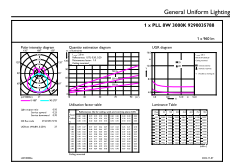


Light Distribution Diagram - CorePro LED PLL HF 8W 830 4P 2G11



Spectral Power Distribution Colour - CorePro LED PLL HF 8W 830 4P 2G11

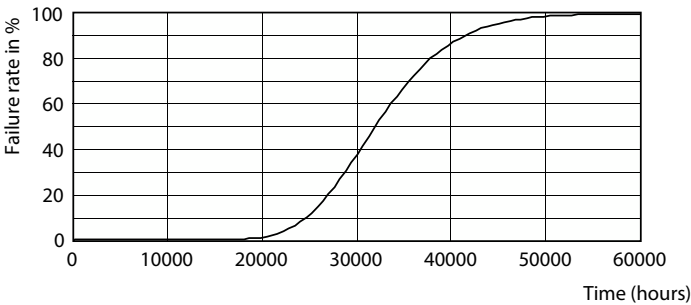
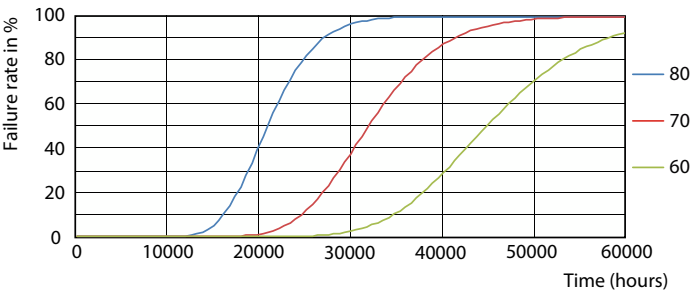
Photometric data



General uniform lighting - CorePro LED PLL HF 8W 830 4P 2G11

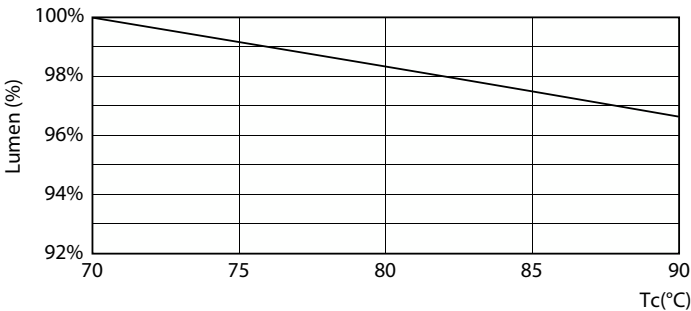
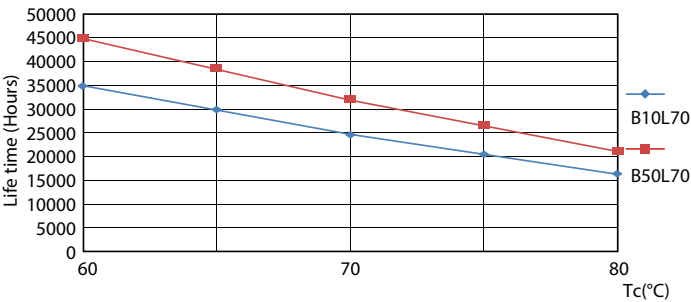
General uniform lighting - CorePro LED PLL HF 8W 830 4P 2G11

Lifetime



Life Expectancy Diagram - CorePro LED PLL HF 8W 830 4P 2G11

Life Expectancy Diagram - CorePro LED PLL HF 8W 830 4P 2G11



Life Expectancy Diagram - CorePro LED PLL HF 8W 830 4P 2G11

Lumen Maintenance Diagram - CorePro LED PLL HF 8W 830 4P 2G11

CorePro LED PLL

Lifetime



Lumen Maintenance Diagram - CorePro LED PLL HF 8W 830 4P 2G11

