

# CorePro LED PLT 4P



## CorePro LED PLT HF 18.5W 840 4P GX24q-4

The CorePro LED PLT 4P integrates a LED light source into a traditional fluorescent form factor. This product is the ideal solution for uplamping in general lighting applications: it meets basic lighting requirements, offers significant energy savings, and is environmentally friendly

### Product data

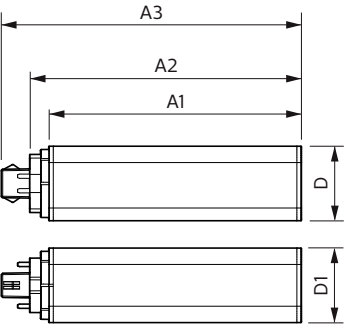
General Information		Input Frequency	
Cap-Base	GX24Q-4 [GX24q-4]	Power Consumption	18.5 W
Nominal lifetime	30,000 hour(s)	Lamp Current (Max)	400 mA
Switching Cycle	200,000	Lamp Current (Min)	250 mA
Lighting Technology	LED	Starting Time (Nom)	0.5 s
Flux measurement reference	Sphere	Warm-up time to 60% light	0.5 s
CE mark	Yes	Power Factor (Fraction)	0.9
EU RoHS compliant	Yes	Voltage (Nom)	20-60 V
Light Technical		LED alternative to fluorescent lamp power	42 W
Color Code	840 [CCT of 4000K]	Max. lamp no. on MCB B type 10A - Mains	-
Beam Angle (Nom)	120 degree(s)	Max. lamp no. on MCB B type 10A – EM ballast without Comp. Cap.	-
Luminous Flux	2,250 lm	Max. lamp no. on MCB B type 10A – EM ballast with Comp. Cap.	-
Color Designation	Cool White (CW)	Max. lamp no. on MCB B type 16A - Mains	-
Correlated Color Temperature (Nom)	4000 K	Max. lamp no. on MCB B type 16A – EM ballast without Comp. Cap.	-
Luminous Efficacy (rated) (Nom)	121 lm/W	Max. lamp no. on MCB B type 16A – EM ballast with Comp. Cap.	-
Color Consistency	<6	Temperature	
Color rendering index (CRI)	82	Ambient temperature range	-20 °C to 35 °C
LLMF At End Of Nominal Lifetime (Nom)	70 %		
Photobiological safety according to EN 62471	RG1		
Operating and Electrical			
Line Frequency	20K-80K Hz		

CorePro LED PLT 4P

T-Case Maximum (Nom)	75 °C
<b>Controls and Dimming</b>	
Dimmable	No
<b>Mechanical and Housing</b>	
Bulb Finish	Frosted
Bulb Material	Plastic
Product Length	200 mm
Bulb Shape	PL-T
<b>Approval and Application</b>	
Energy Efficiency Class	E
Energy Saving Product	Yes
Approval Marks	RoHS compliance TUV CE marking KEMA Keur certificate
Energy Consumption kWh/1000 h	19 kWh

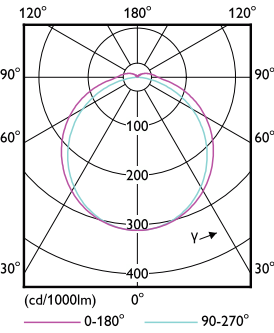
EPREL Registration Number	1361427
<b>Product Data</b>	
Order product name	CorePro LED PLT HF 18.5W 840 4P GX24q-4
Full product name	CorePro LED PLT HF 18.5W 840 4P GX24q-4
Full product code	871951448790100
Order code	929003577002
Material Nr. (12NC)	929003577002
Numerator - Quantity Per Pack	1
EAN/UPC - Product/Case	8719514487901
Numerator - Packs per outer box	20
EAN/UPC - Case	8719514487918

Dimensional drawing

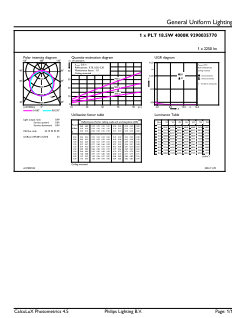


Product	D1	D2	A1	A2	A3
CorePro LED PLT HF 18.5W 840 4P GX24q-4	42 mm		139 mm	151 mm	166 mm

Photometric data



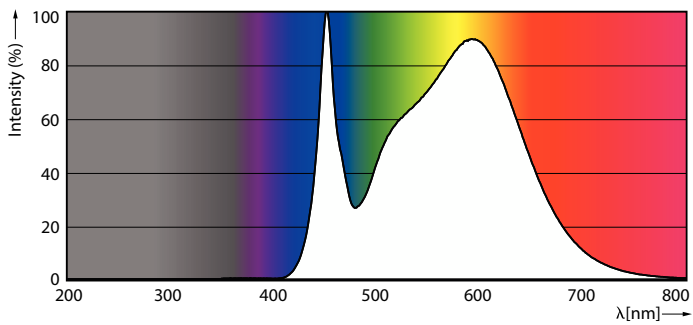
Light Distribution Diagram



General uniform lighting - CorePro LED PLT HF 18.5W 840 4P GX24q-4

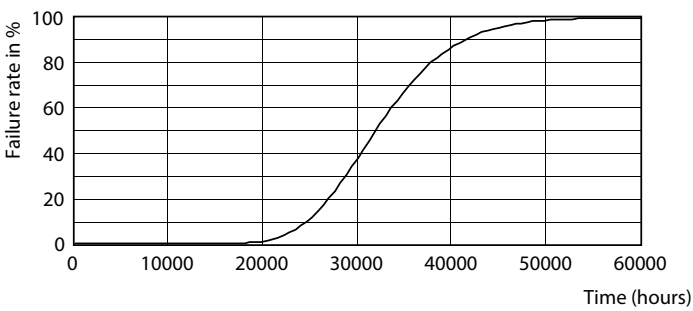
CorePro LED PLT 4P

Photometric data

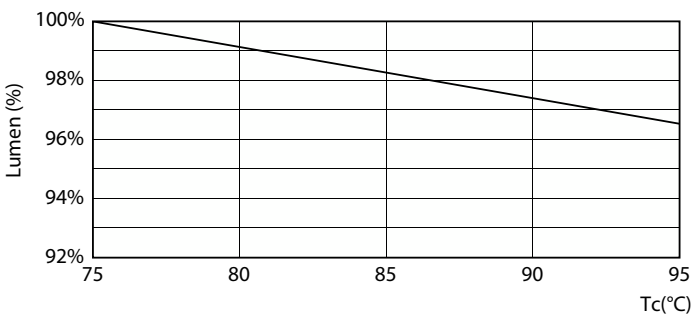


Spectral Power Distribution Colour

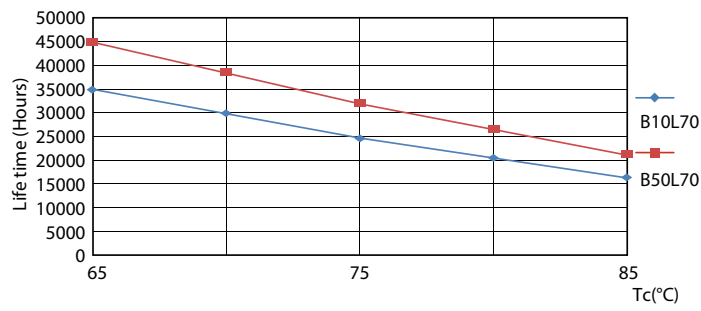
Lifetime



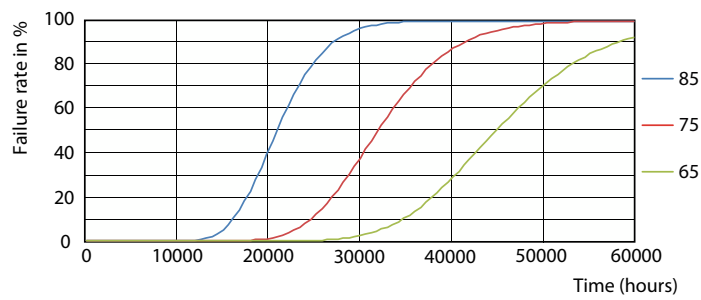
Life Expectancy Diagram - CorePro LED PLT HF 18.5W 840 4P GX24q-4



Lumen Maintenance Diagram



Life Expectancy Diagram - CorePro LED PLT HF 18.5W 840 4P GX24q-4



Life Expectancy Diagram - CorePro LED PLT HF 18.5W 840 4P GX24q-4

CorePro LED PLT 4P

Lifetime



Lumen Maintenance Diagram - CorePro LED PLT HF 18.5W 840 4P GX24q-4

